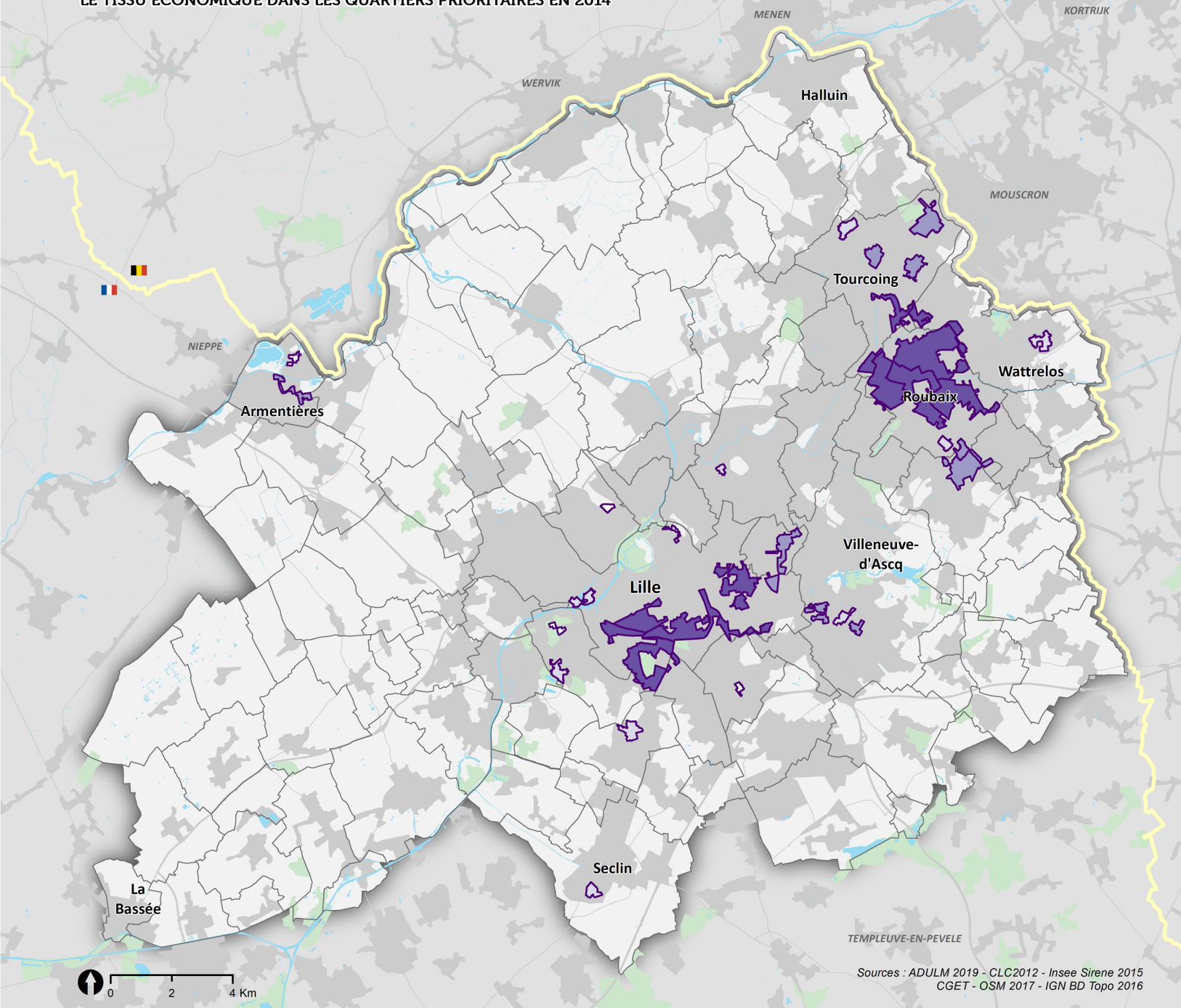

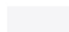





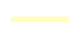
LE TISSU ÉCONOMIQUE DANS LES QUARTIERS PRIORITAIRES EN 2014




 Quartier prioritaire de la politique de la ville (QPV)

Le tissu économique dans les quartiers prioritaires*

-  Tissu économique très faible
-  Tissu économique assez faible
-  Tissu économique assez important
-  Tissu économique très important

 Frontière France/Belgique

 Limite communale

* cf méthodologie page suivante