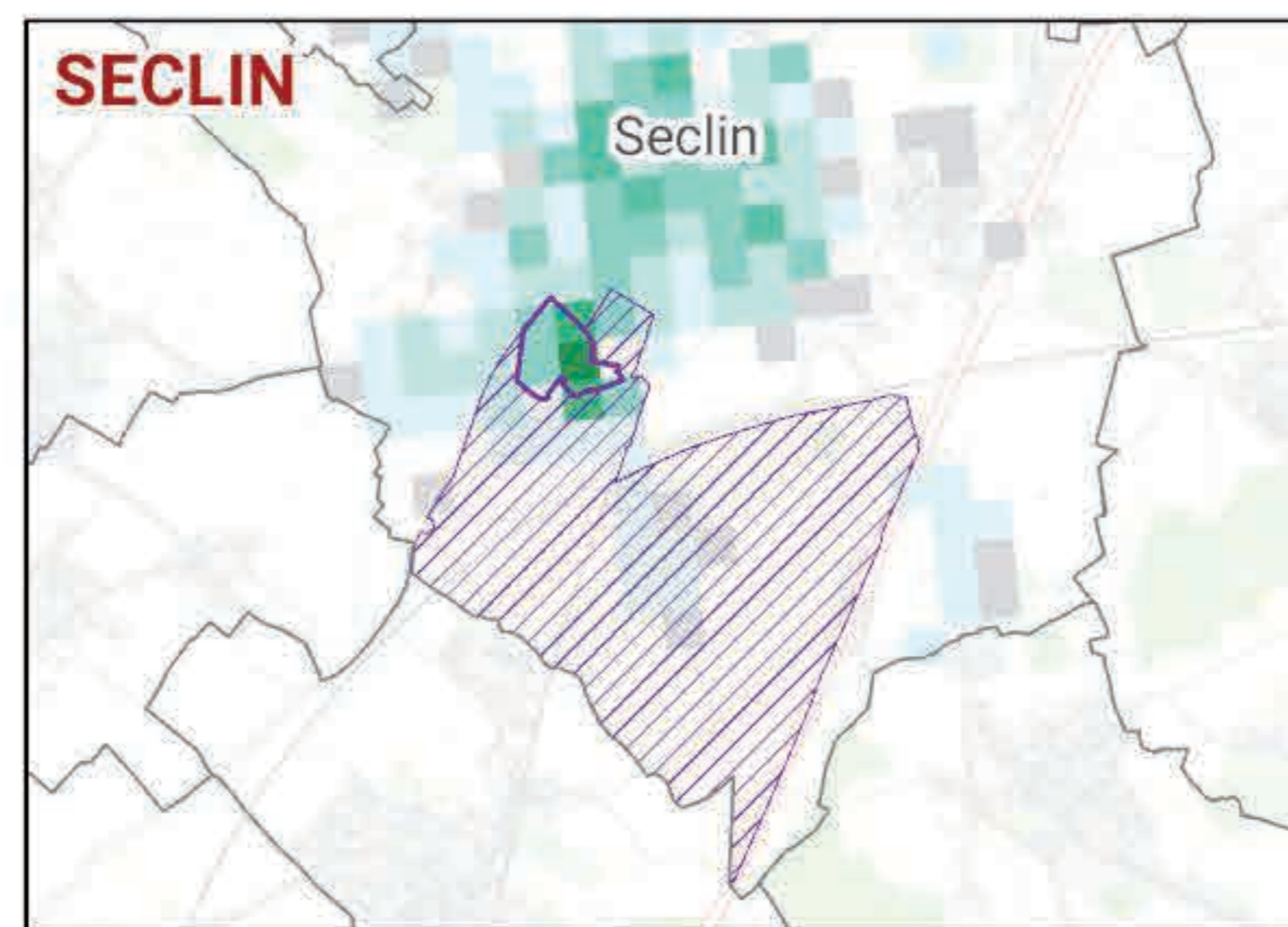
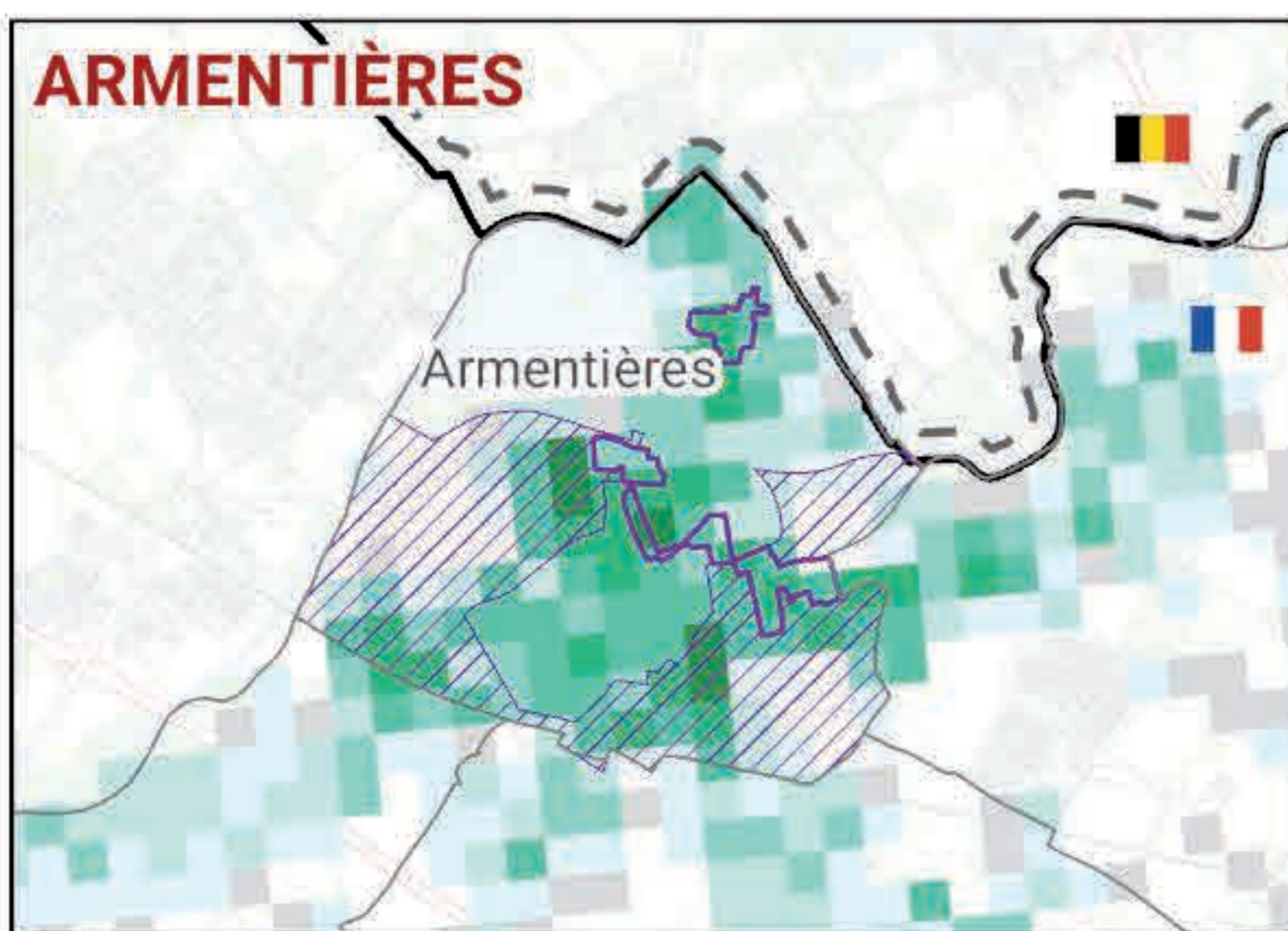
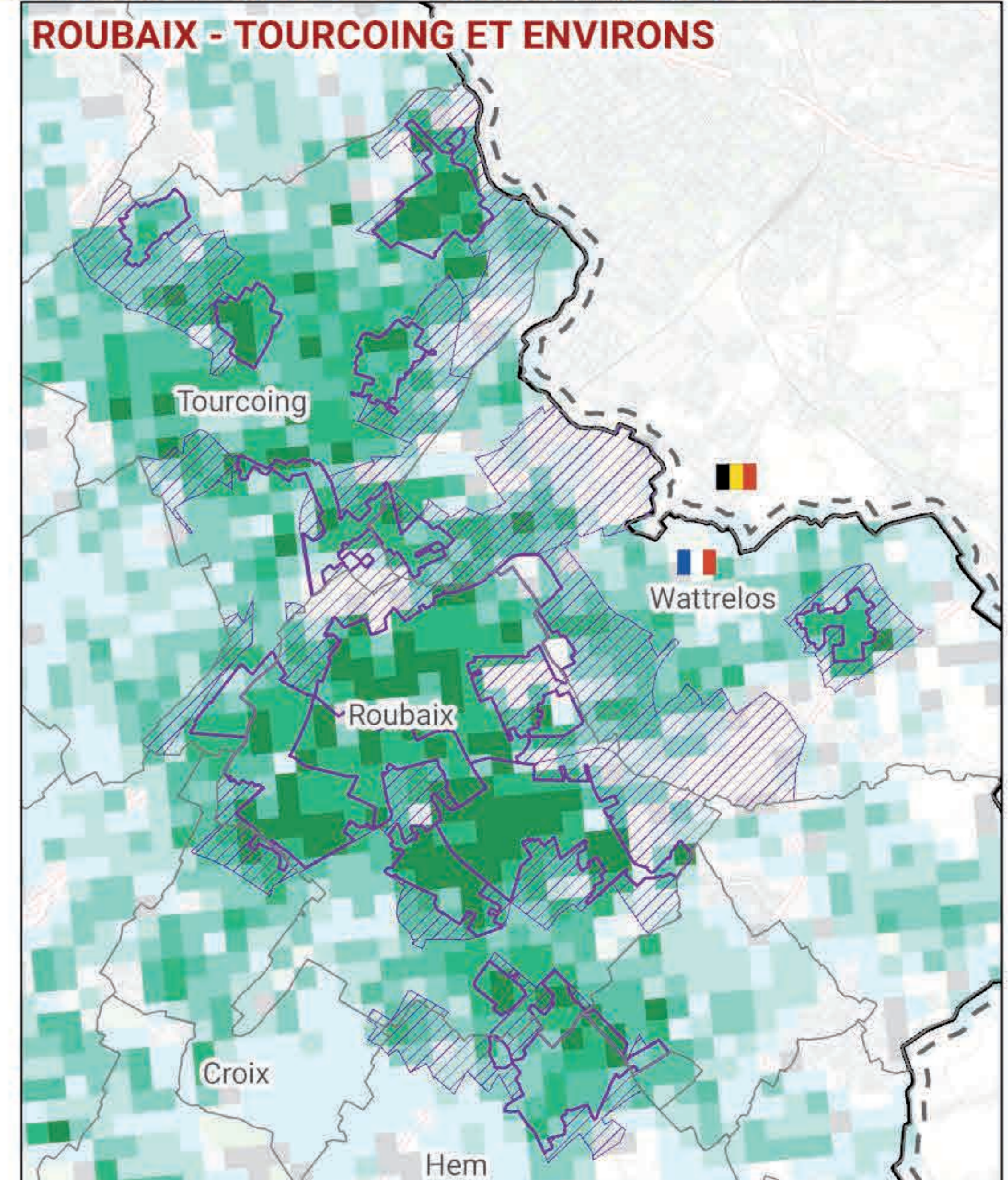
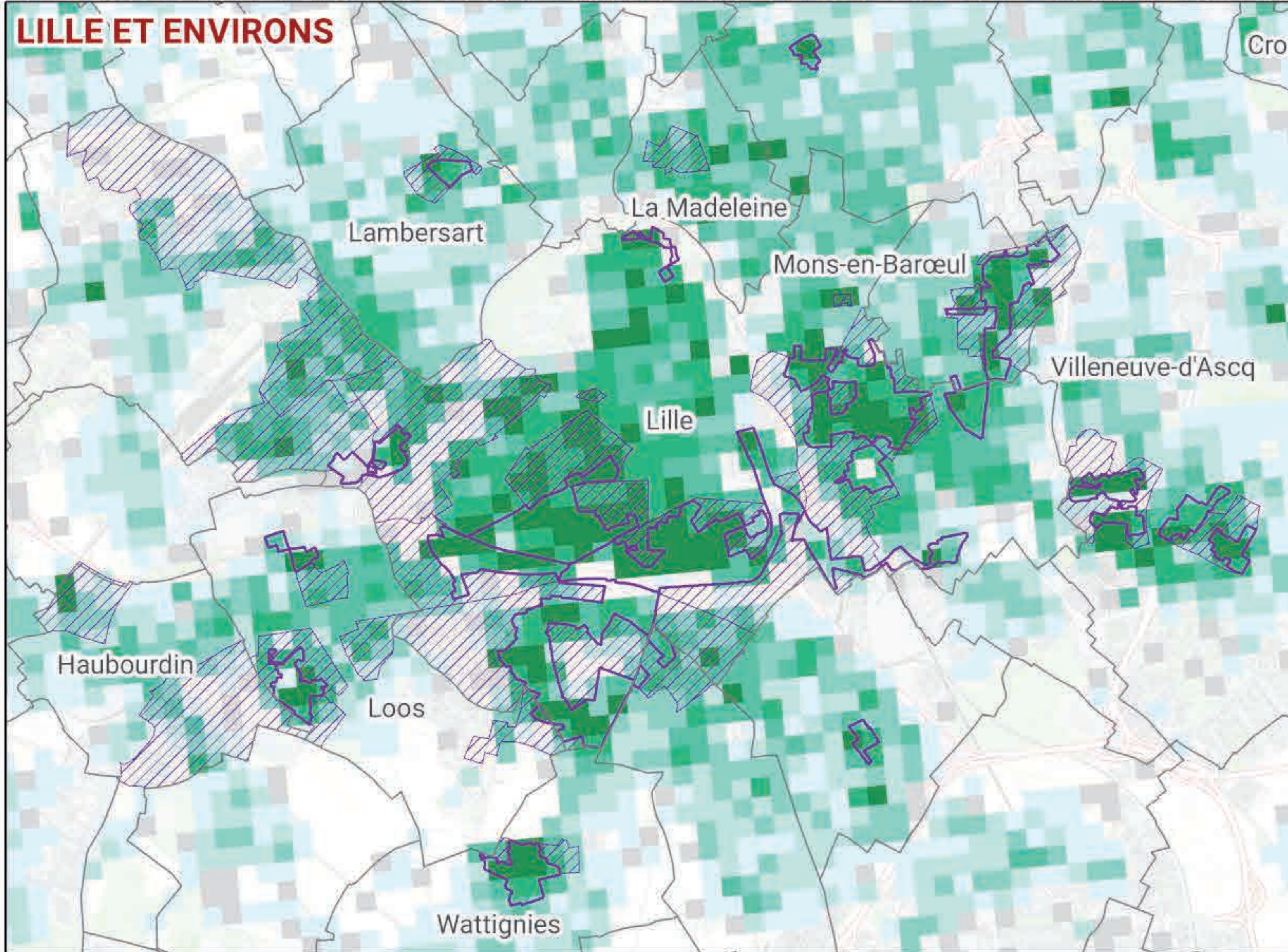











ZOOM SUR LE TAUX DE PAUVRETÉ À L'ÉCHELLE DE CARREAUX DE 200 MÈTRES DU 200 MÈTRES EN 2017



-  Quartier prioritaire de la politique de la ville
-  Quartier de veille active

Nombre des ménages pauvres par carreau* en 2015

-  secret statistique
-  moins de 2
-  de 2 à 5
-  de 6 à 14
-  de 15 à 29
-  de 30 à 59
-  60 ou plus

* carreau de 200m*200m



Sources : ADULM 2021 - MEL 2021 - FiLoSoFi 2015 - CGET Géo2France - CLC2012 - OSM 2017 - IGN BD Topo 2016

Mai 2021

